



Sandwich, Bobbin and Shear Pad Mountings

Description

Rubber mounts are an effective anti vibration solution for various applications including compressors, engines, gearboxes, fans, instrumentation and generators. EB type sandwich mounts consist of rubber bonded to rectangular or steel plates. Due to their construction, the optimum combination of axial and shear stiffness can be achieved to suit the soft mounting of machines and vibrating devices.

EC type mounts are similar to EB mounts. Stud mounts but offer a variety of fixture options with integral male and female threads. ED type mounts, also known as bobbin mounts, offer integral female threads at each end.

Applications

- Compressors
- Engines
- Gearboxes
- Fans
- Instrumentation
- Generators

Specification

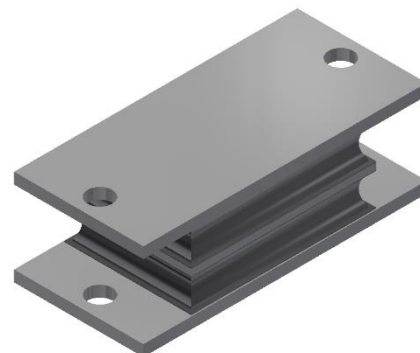
Tube/Bar: Mild Steel, Carbon Steel, Stainless Steel, Brass, Bronze, Plastic and Aluminium (standards and grades available upon request)

Elastomer: Natural Rubber, EPDM, Chloroprene, Polyurethane (standards available upon request)

Finishes: Oiled, Plated, Painted, Phosphated and Anodised (Ground tolerances available).

Tolerances: Ground Tolerances available upon request

Load Data: Load deflection data available upon request



EB Mount



EC Mount



ED Mount



Product List

Part Number	Profile	Thread Type Top	Thread Number Top	Thread Type Base	Thread Number Base	No of interleafs	Height	Rubber Profile	Length
EB0252	Cylindrical	Male M8x38	1	Male M8x23	1	0	16	Ø25	77
EB0281	Rectangular	Male M8x18	1	Hole Ø9	2	0	28	38x52	79
EB0321	Rectangular	Male M8x17	2	Hole Ø8.4	2	0	31.75	53.3*66.7	92
EB0322	Rectangular	Male ½"x20 UNF	2	Male ½"x20 UNF	2	0	31.57	61.2x105.7	105.7
EB0351	Rectangular	Male M12x36	2	Hole Ø13.5	2	0	35	114.5x51	175
EB0352	Rectangular	Male M12x36	2	Hole Ø13.5	2	1	35	114.5x51	175
EB0353	Rectangular	Male ½ whit x 25.6	2	Hole Ø13.5	2	0	35	114.5x51	175
EB0361	Rectangular	Male M10x21.5	2	Male M10x21.5	2	0	36	100x40	100
EB0432	Rectangular	Hole Ø10	2	Hole Ø10	2	1	43	57.1x57.1	108
EB0433	Rectangular	Hole Ø10.3	2	Hole Ø10.3	2	1	43	57.2x61.5	108
EB0434	Rectangular	Hole Ø11	2	Hole Ø11	2	1	43	57x83	127
EB0441	Cylindrical	Male M8x21.5	1	Male M8x21.5	1	1	36.5	Ø44.5	79.5
EB0442	Cylindrical	Male 5/16bsfx 15.5	1	Male 5/16bsf x 15.5	1	1	33.2	Ø44.5	69.2
EB0443	Cylindrical	Male M10x25	1	Male M10x25	1	1	36.5	Ø44.5	86.5
EB0461	Cylindrical	Male M10x27	1	Male M10x27	1	0	25.4	Ø46	79.4
EB0462	Cylindrical	Male M10x25	1	Male M10x8	1	0	25	Ø45	58
EB0511	Cylindrical	Male 3/8UNF x 21	1	Male 3/8 UNF x 21	1	0	33	Ø51	74
EB0512	Cylindrical	Male M10x25	1	Male M10x25	1	0	33	Ø50.8	84
EB0513	Cylindrical	Male M10x20	1	Male M10x20	1	0	33	Ø50.8	74
EB0531	Rectangular	Hole Ø10.4	2	Hole Ø10.4	2	1	52.8	57x127	168



Part Number	Profile	Thread Type Top	Thread Number Top	Thread Type Base	Thread Number Base	No of interleafs	Height	Rubber Profile	Length
EB0532	Rectangular	Hole Ø10.4	2	Hole Ø10.4	2	1	52.8	57x127	168
EB0551	Rectangular	Male M6x32	2	n/a	n/a	0	15	38x55	55
EB0552	Rectangular	Male M6x26	2	n/a	n/a	0	15	38x55	55
EB0553	Rectangular	Male M6x21	2	n/a	n/a	0	15	38x55	55
EB0571	Cylindrical	Male M10x25	1	Male M10x25	1	1	36.6	Ø57.2	86.6
EB0621	Cylindrical	Male M10x25.4	1	Male M10x25.4	1	0	41.3	Ø63	92
EC0301	Cylindrical	Female M10	1	Male M10 x 18	1	0	30	Ø30	48
EC0501	Cylindrical	Female M10	1	Male M10x15	1	0	45	Ø50	60
ED0161	Cylindrical	Female M5	1	Female M5	1	0	25	Ø16	25
ED0201	Cylindrical	Female M6	1	Female M5	1	0	15	Ø20	15
ED0202	Cylindrical	Female M6	1	Female M6	1	0	15	Ø20	15
ED0251	Cylindrical	Female M8	1	Female M8	1	0	25	Ø25	25
ED0301	Cylindrical	Female M8	1	Female M8	1	0	25	Ø30	25
ED0401	Cylindrical	Female M8	1	Female M8	1	0	30	Ø40	30
ED0501	Cylindrical	Female M10	1	Female M10	1	0	35	Ø50	35
ED0831	Cylindrical	Female M12	1	Female M12	1	0	60	Ø83	66
ED01301									
EM0421	Rectangular	Hole Ø14	4	Hole Ø14	4	0	42	108x205	300
EM1401	Rectangular	Male M10x20	2	Slots Ø10	2	0	45	50x140	140
EM2401	Rectangular	Hole Ø14	4	Hole Ø14	4	1	95	180x240	240