

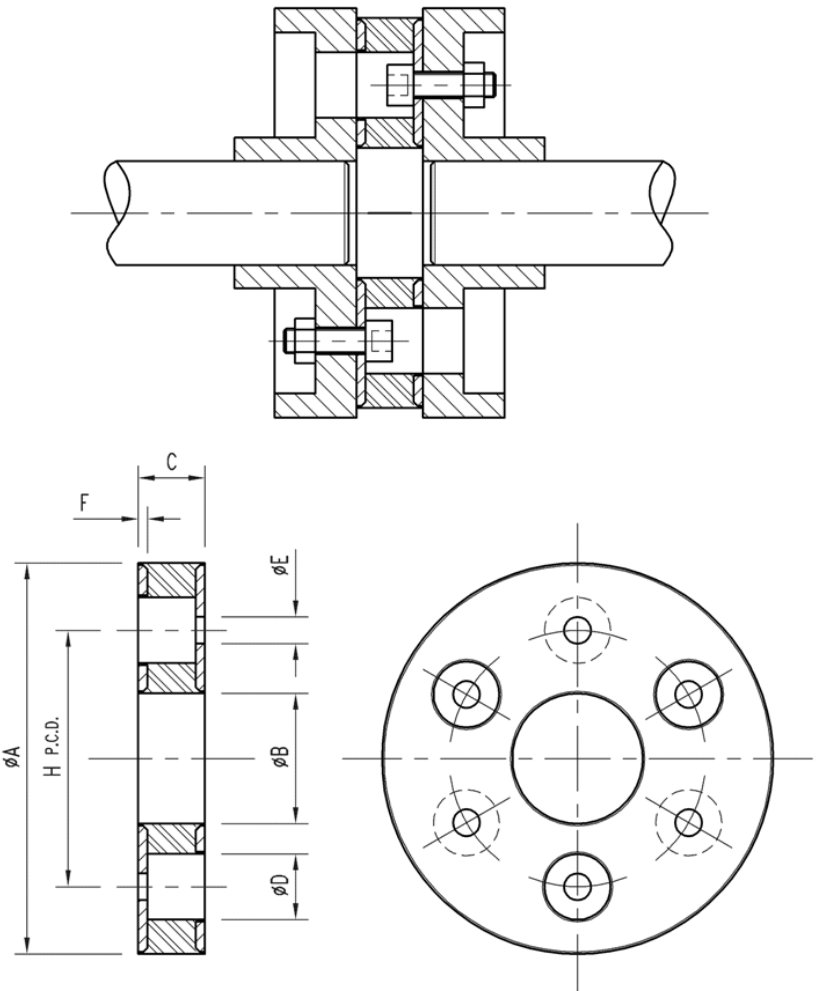
Type HC – Disc Coupling

Description

Disc Couplings allow for severe axial misalignment and also accommodate large irregularities and fluctuations in torque transmission. They are suitable for a wide range of machinery drives.

The Coupling consists of a flexible natural rubber disc bonded to a pair of circular steel plates. Fixing holes in the coupling permit it to be assembled between Driver and Driven Flanges of conventional design without interfering with machinery settings. Assembly should be by thin head chamfer bolts, which will permit the coupling to shear safely in the event of catastrophic failure of one or other of the coupled units.

We currently supply four sizes of couplings in a variety of rubber hardness. We are happy to provide technical information on a wider range of couplings and can custom build new designs.



Specification

Natural Rubber to BS5179:1975

Tolerances available on request

All dimensions quoted in millimetres