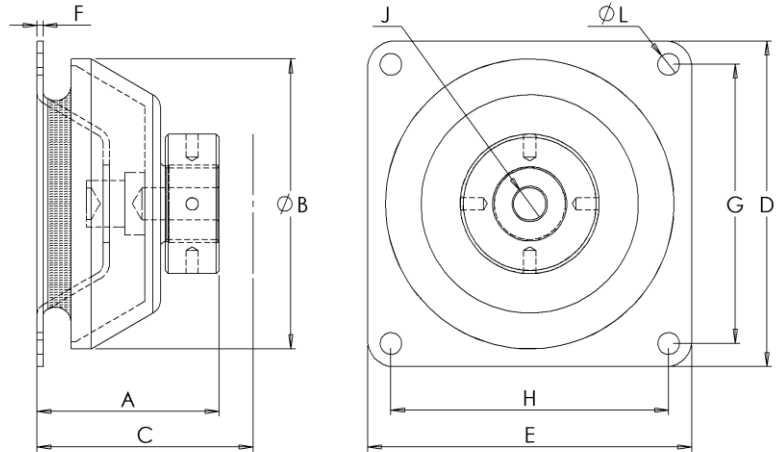




Type GH – Semi Bonded Pedestal Mount



Specifications

Natural Rubber to BS5179:1975

Highest tensile specification achieved for each hardness band. Each band is tighter than allowed by specification.

MS Pressing to: BS6323: Part 4

SS Pressing to: BS970: Part 1:1983

Castings to: BS310 / BS2789

Standard finish – Self Finish.

Alternative fixings can be designed.

Various stiffnesses available

Tolerances and load-deflection data available on request.

All dimensions quoted in millimetres

Description

The GH type pedestal mounting consists of rubber bonded to a pressed or fabricated flange and assembled with a metal cap. A retaining washer prevents separation when the loading is reversed.

Designed principally to endure axial loads and accommodate torsional, conical and radial movements.

Suitable for supporting vibrating machinery up to 25tons using 4 mountings.

Available with height adjustment to aid alignment.

Applications

- Wind turbine generator mounts
- Centrifugal filtration and separation machines
- Stationary and mobile generators