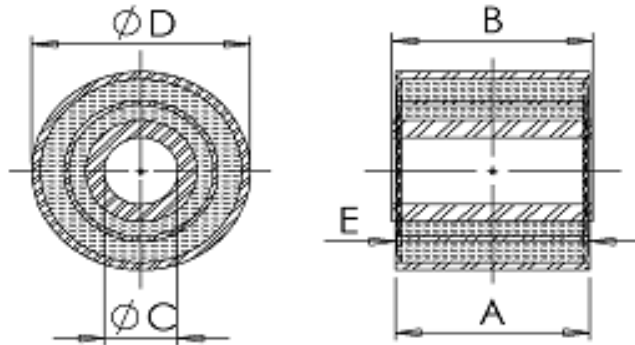


## Type CA & CB – Semi & Fully Bonded Duplex Bush



### Applications

- Vehicle suspension
- Pulverisers
- Pivot bearings
- Wind energy

### Description

Duplex bushes are similar to standard bushes (BA & BB Type) but are reinforced with an intermediate tube. Duplex bushes can either be semi or fully bonded depending on size and loads. The bush rubber is pre-stressed to give maximum dynamic strength and durability.

This bush configuration provides high radial load bearing whilst retaining low axial and torsional stiffness rates.

### Specifications

Natural Rubber to BS5179:1975

Highest tensile specification achieved for each hardness band. Each band is tighter than allowed by specification.

Tube to: BS6323: Part 4, DIN2393 / DIN1629

Bar to: BS970: Part 1:1983

Tolerances and load-deflection data are available on request

For our current product range, outside diameter  $\phi D$  ranges from  $\phi 57\text{mm}$  to  $\phi 250\text{mm}$ .

Contact us for more details of our current product range or a quotation for a new product.