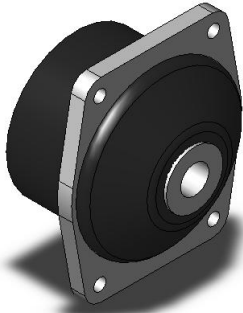
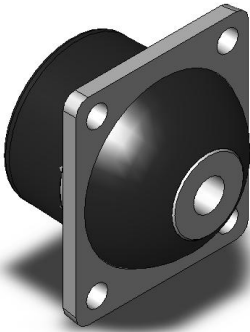
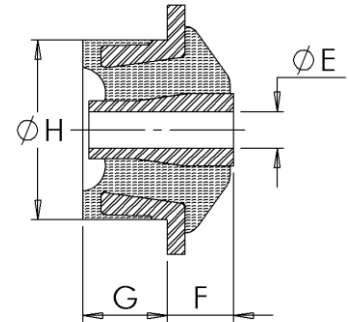
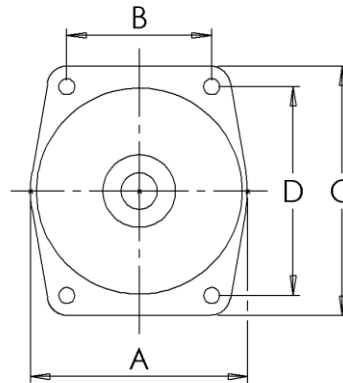




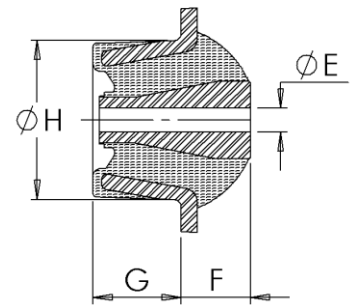
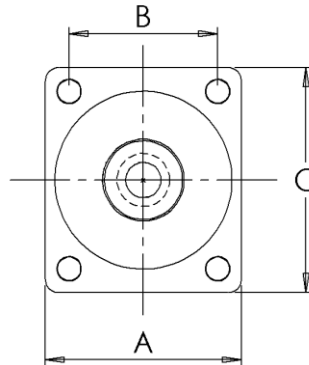
## Type GC – Fully Bonded Flange Mount



Type 1



Type 2



### Specifications

Natural Rubber to BS5179:1975

Highest tensile specification achieved for each hardness band. Each band is tighter than allowed by specification.

Casting to: BS970:Part 1:1983

Bar to: BS970: Part 1:1983

Standard finish – Black Paint.

Various stiffnesses available

Tolerances and load-deflection data available on request.

All dimensions quoted in millimetres

### Description

GC type flange mountings consist of rubber bonded to an inner metal and flange casting..

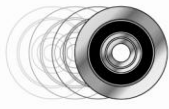
Designed principally accommodate axial loads and accommodate torsional, conical and radial movements.

The GC type range of mountings have high load capacity with relatively large static deflections. The mounts are usually assembled with load and rebound washers to control and limit movement of the suspended equipment under shock loads. Centre fixing bolts should be torque tightened to the recommended values.

Ideal for mounting engines in automotive applications.

### Applications

- Engine mounts
- Transmission mounts
- Cab mount



**aegis rubber  
engineering**

Tel. +44 (0)1444 871116 Fax. +44 (0)1444 248327  
Units 14-15 Bolney Grange Business Park  
Haywards Heath, West Sussex, RH17 5PB  
sales@aegis-rubber-eng.co.uk  
[www.aegisrubberengineering.co.uk](http://www.aegisrubberengineering.co.uk)

---