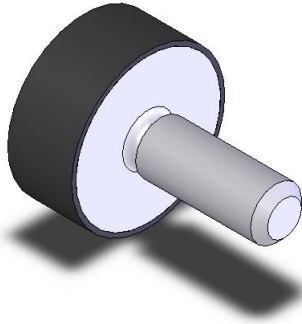


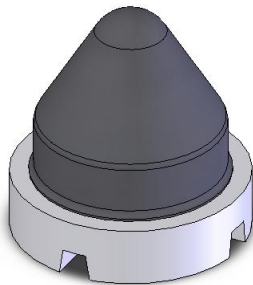


Type FA – Stud mounting

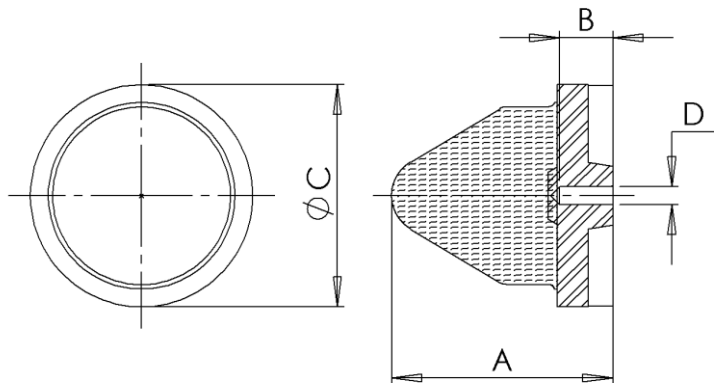
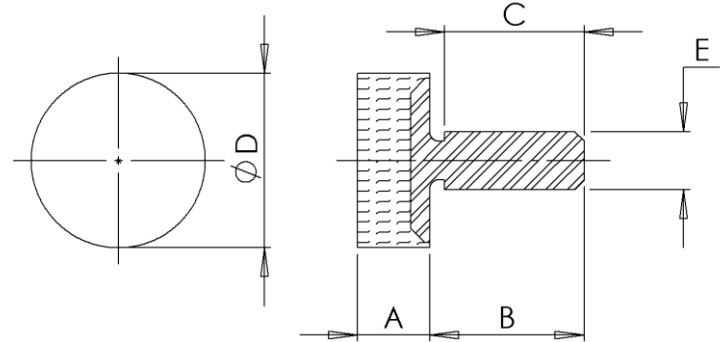
Tolerances and load-deflection data available on request.



Type 1



Type 2



Applications

- Pad mounts
- Limit stops

Specifications

Natural Rubber to BS5179:1975

Highest tensile specification achieved for each hardness band. Each band is tighter than allowed by specification.

Castings: BS310 / BS2789

MS Plate: BS1449: Part

1:1983:CR4

SS Plate: BS149: Part

2:1983:304/316

Standard finish – Self Finish
(Rubber), Black Paint (Metals).

Various stiffnesses available

Description

FA type stud mountings consist of a 'head' of rubber bonded to a base metal. They are designed principally to accommodate axial loads and accommodate small torsional, conical and radial movements.

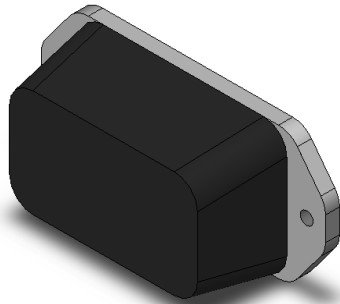
The FA type of stud mounting has excellent properties for vibration and shock isolation, giving low stiffness values for high working deflections.

Ideal for light and heavy duty applications, supporting vibrating or delicate machinery.

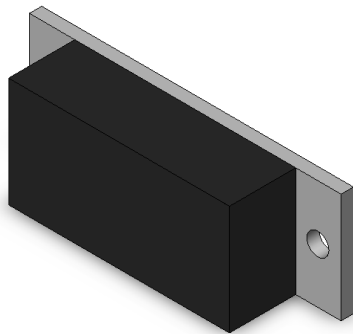
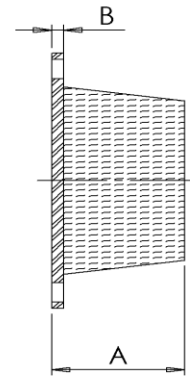
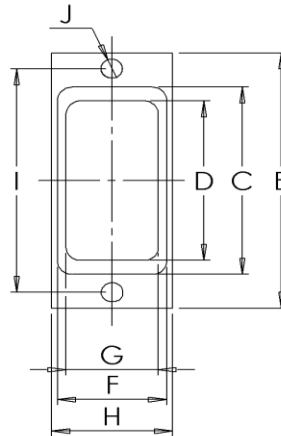
This part is suitable for light duty applications where a soft mount is needed for vibration isolation.



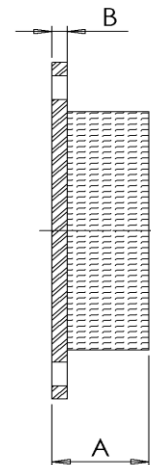
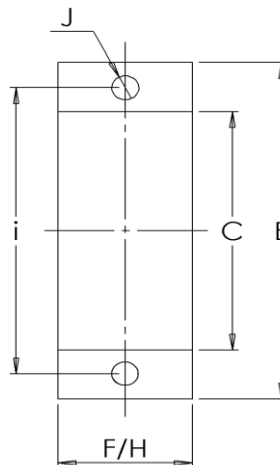
Type FD – Rectangular Bump Stop



Type 1



Type 2



Specifications

- Natural Rubber to BS5179:1975
- Highest tensile specification achieved for each hardness band. Each band is tighter than allowed by specification.
- Tube to: BS6323: Part 4
- DIN2393 / DIN1629
- Bar to: BS970: Part 1:1983
- Standard finish – Self Finish.
- Bushes can be designed for solid or hollow inners.
- Various stiffnesses available
- Tolerances and load-deflection data available on request.
- All dimensions quoted in millimetres